

TATES

020 7602 6020



Rugby Mansions, Bishop Kings Road, London W14 8XD

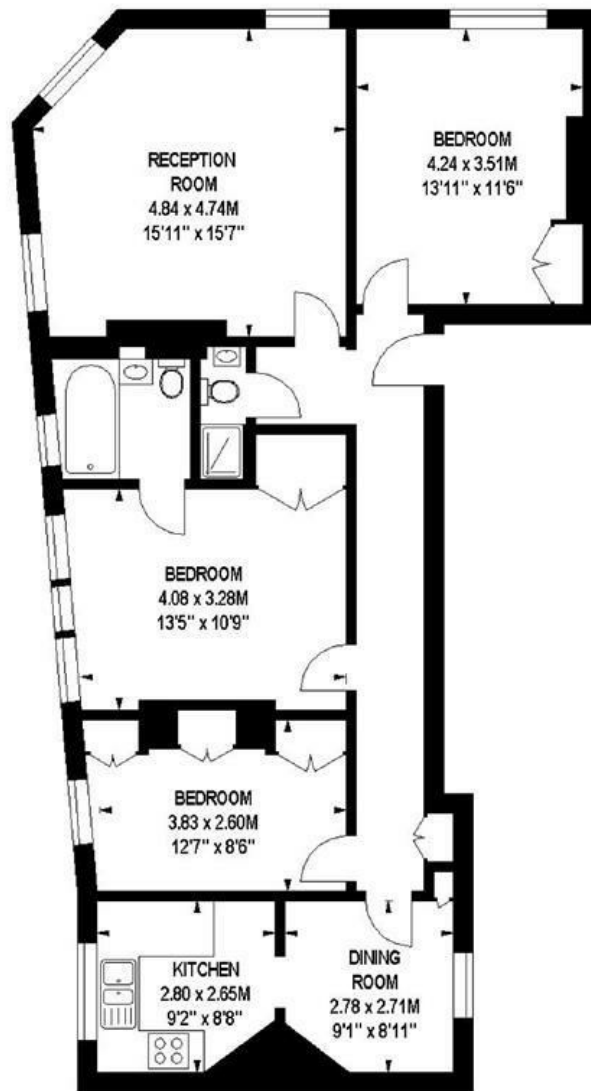
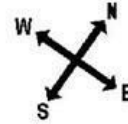
£3,495 Per month

- Three bedroom flat
- Top floor
- Newly redecorated
- Very good transport link
- Red brick mansion flat
- Spacious flat
- Unfurnished
- Energy Efficiency Rating: Band E

Rugby Mansions, W14

Approximate gross internal area

101 sq m / 1087 sq ft



Third Floor

Illustration for identification purposes only, not to scale

All measurements are maximum, and includes wardrobes and window bays where applicable

Prepared by Mays Floorplans © . Tel 020 8871 4668

Whilst these particulars are produced in good faith and are believed to be correct, no guarantee is given, nor any responsibility accepted, by Tates nor by any of its representatives, for their accuracy. The particulars do not constitute part of any offer or contract, and it is recommended that such things as measurements, condition, structure, services, appliances, fixtures and fittings and facilities are all independently assessed by the prospective purchaser or renter of the subject property prior to committing to any contract.

Energy Efficiency Rating		
	Current	Potential
Very energy efficient - lower running costs		
(92 plus) A		
(81-91) B		
(69-80) C		
(55-68) D		
(39-54) E	49	50
(21-38) F		
(1-20) G		
Not energy efficient - higher running costs		
England & Wales		
EU Directive 2002/91/EC		

135 Hammersmith Road, West Kensington, London W14 0QL

mail@tatesestates.co.uk

tatesestates.co.uk

Tates (Agents) Ltd. Registered in England and Wales No. 02356337

Registered Office: Imperial House, 8 Keane Street, London WC2B 4AS

